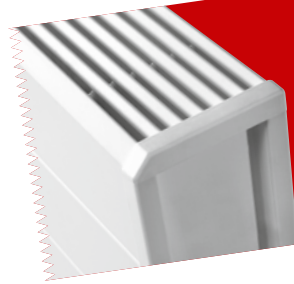




jaga



TEMPO WALL MOUNTED

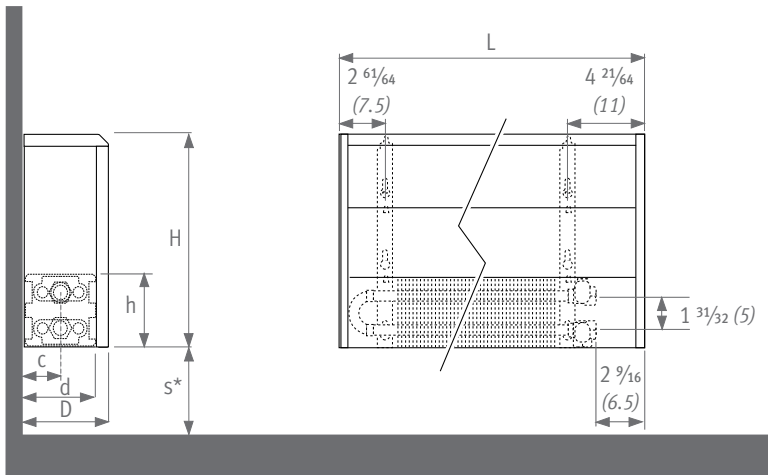
Dimensions & heat output

EURO NORM
EN 442

LOW
H₂O

GUARANTEE
30
YEAR
FIN FINE ELEMENT

DIMENSIONS

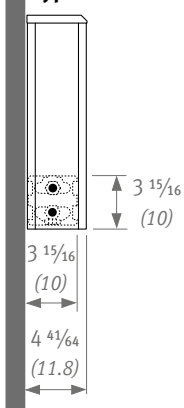


* Smaller dimensions can decrease output.

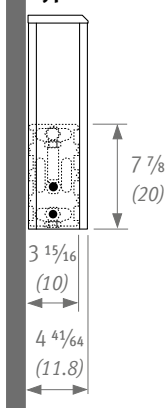
Type	d	h	D	c	s
10	3 15/16 (10)	3 15/16 (10)	4 41/64 (11.8)	2 3/32 (5.3)	3 15/16 (10)
15	5 29/32 (15)	3 15/16 (10)	6 39/64 (16.8)	3 5/64 (7.8)	4 23/32 (12)
20	7 7/8 (20)	3 15/16 (10)	8 37/64 (21.8)	4 1/16 (10.3)	5 29/32 (15)

Type	d	h	D	c	s
11	3 15/16 (10)	7 7/8 (20)	4 41/64 (11.8)	2 3/32 (5.3)	3 15/16 (10)
16	5 29/32 (15)	7 7/8 (20)	6 39/64 (16.8)	3 5/64 (7.8)	4 23/32 (12)
21	7 7/8 (20)	7 7/8 (20)	8 37/64 (21.8)	4 1/16 (10.3)	5 29/32 (15)

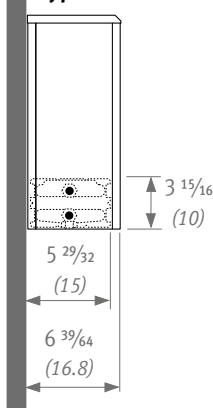
Type 10



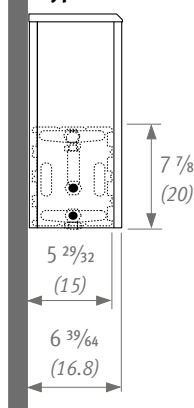
Type 11



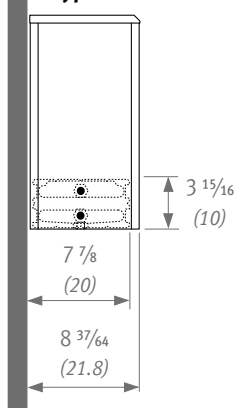
Type 15



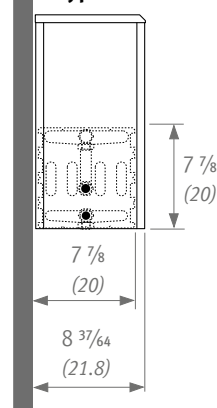
Type 16



Type 20



Type 21



Note: dimensions in “()” are shown in centimeters.

The information in this technical brochure is correct at the time of printing. Jaga reserves the right to change product specification at any time in line with our policy of continuous improvement and innovation.

TEMPO WALL MOUNTED TYPE 20

ORDER CODE: TEMW. 020 040 20. 101 /00

Table with columns: mean T °F (°C), H, L (15.5", 19.5", 23.5", 27.5", 31.5", 35.5", 39.5", 43.5", 47", 55", 63", 71", 78.5", 86.5", 94.5", 102.5", 110", 118").

BTU/hr with 65°F (18.3°C) entering air and 1 GPM flow rate

TEMPO WALL MOUNTED TYPE 21

ORDER CODE: TEMW. 030 040 21. 101 /00

Table with columns: mean T °F (°C), H, L (15.5", 19.5", 23.5", 27.5", 31.5", 35.5", 39.5", 43.5", 47", 55", 63", 71", 78.5", 86.5", 94.5", 102.5", 110", 118").

BTU/hr with 65°F (18.3°C) entering air and 1 GPM flow rate

